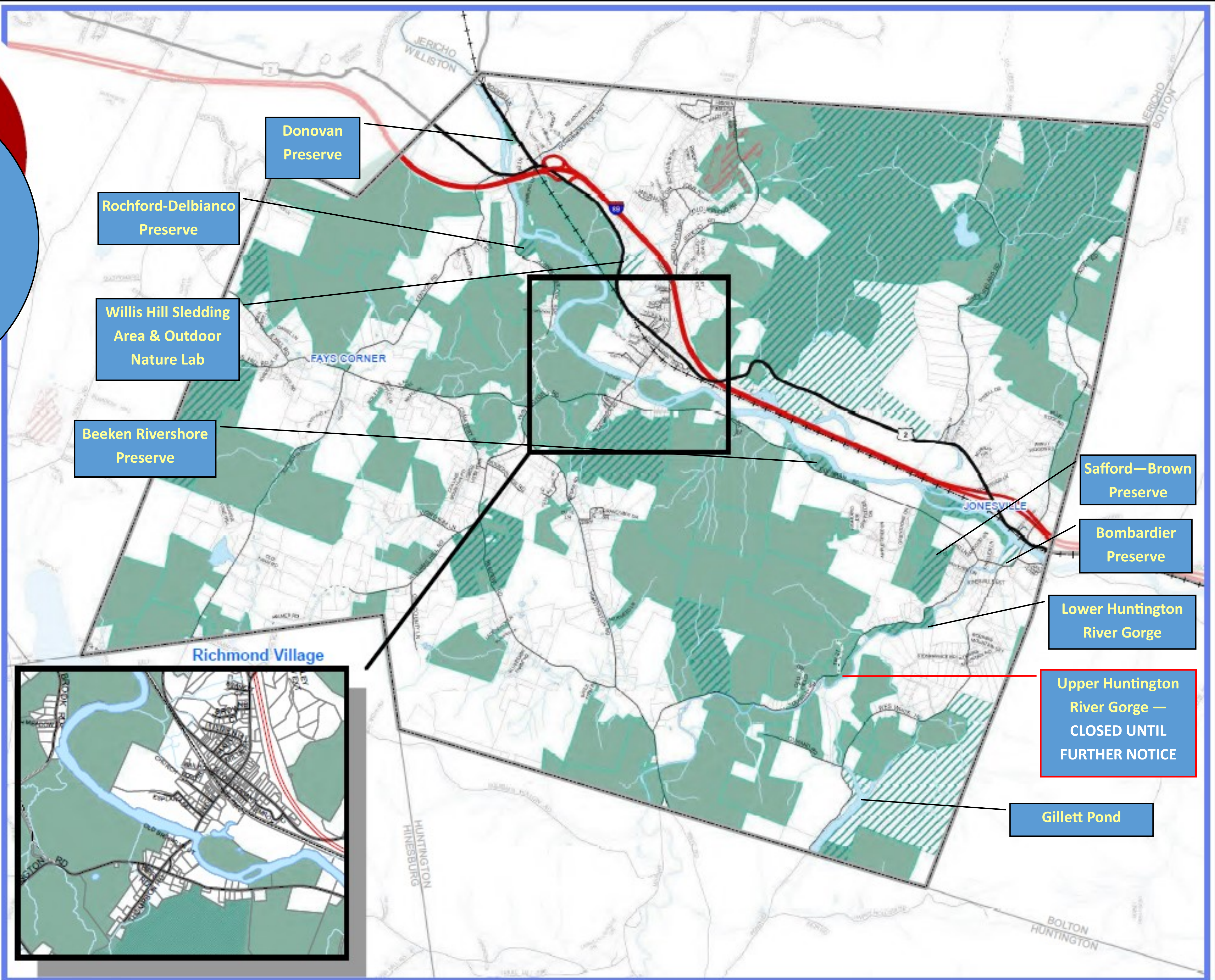


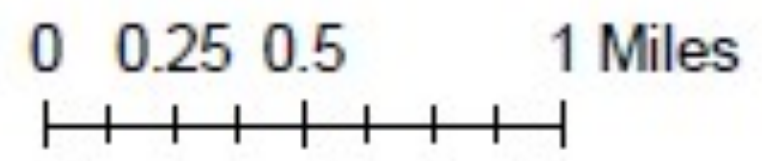
Richmond Land Trust Preserves

April, 2020



Legend

- 2014 Tax Parcel Boundary
- Conserved Areas
- Act 250 Agricultural Soil Mitigation Area
- Use Value Appraisal Properties for Forestry and Agriculture (2015)



Source:
 Roads - Esri/Google 2018 data, January 2018
 Town Boundary - VDOT, 2005
 Conserved Areas - VT Land Trust, Jan 2016, Towns of Richmond
 Current Use - Agency of Natural Resources Open Data Portal
 Disclaimer:
 The accuracy of information presented is determined by its source. Errors and omissions may exist. The Chittenden County Regional Planning Commission is not responsible for them. Questions of on-the-ground location can be resolved by site inspections and/or surveys by registered surveyors. This map is not sufficient for delineation of features on-the-ground. This map identifies the presence of features, and may indicate relationships between features, but is not a replacement for surveyed information or engineering studies.